



Fáilte!



Seminarvortrag zu meiner  
Praxisphase bei  
**Murphy Surveys Ltd.**

vom 16. März bis zum 07. Juni 2015

am 08.10.2015 an der Hochschule Bochum  
vorgetragen von Florian Rogosch



# Übersicht



- Allgemeine Vorstellung meiner Praxisstelle
- Einführung in meine Arbeit im Innen- sowie Außendienst
- Detailliertere Vorstellung meiner Arbeit an Hand eines beispielhaften Projekts



# Murphy Surveys Ltd.

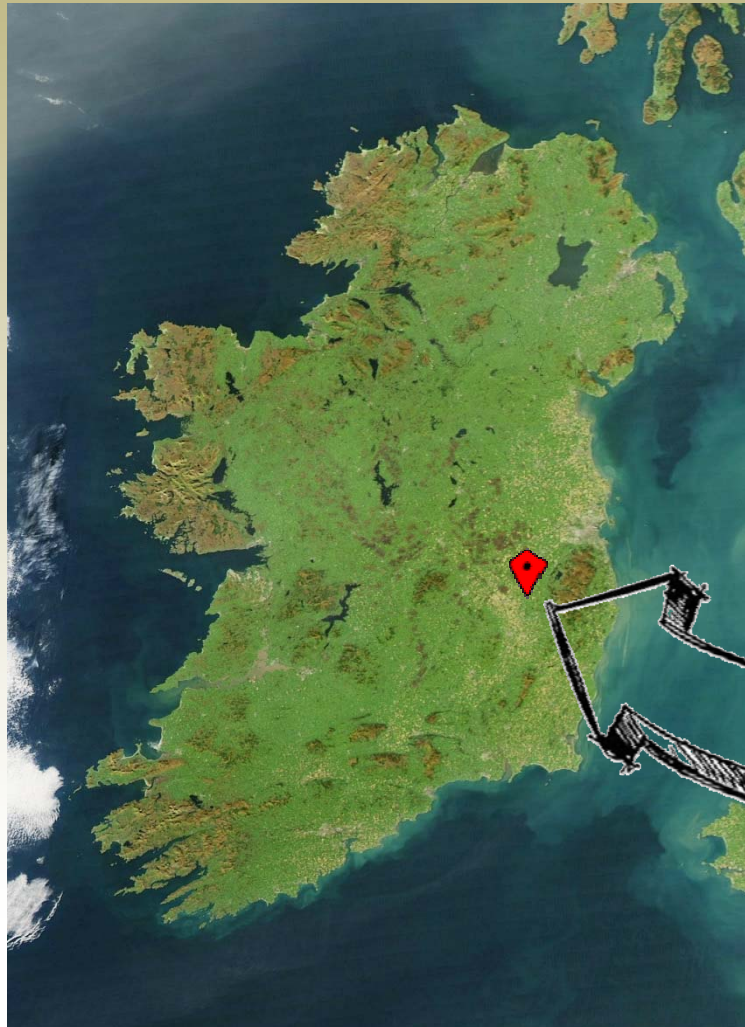


- Established in 1983 (*in the Rep. of Ireland*)
- Nationwide and international operating consultant surveying company
- Several offices in Ireland and the UK
- With a staff of over 120 people in Ireland and over 60 people in the UK





# Location



[https://upload.wikimedia.org/wikipedia/commons/7/74/Ireland\\_%28MODIS%29.jpg](https://upload.wikimedia.org/wikipedia/commons/7/74/Ireland_%28MODIS%29.jpg)

<http://www.murphysurveys.com/wp-content/uploads/2015/02/About-Us-image-440x370.jpg>



Irish head office is based in  
**Kilcullen, Co. Kildare**



# Survey services (*selection*)

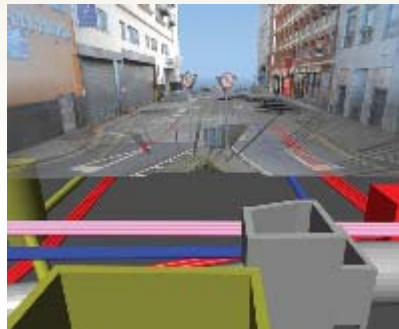


Laser Scanning

Monitoring



Underground  
Utility Surveys



Topographic  
Surveys



BIM

Photographic &  
Aerial Surveys





# Daily work

in the **laser scanning department**



- A team with around 13 people very international !
- work on site →  $\frac{2}{3}$  of the time assisted experienced surveying engineers
- office →  $\frac{1}{3}$  of the time processed the data I gathered on site





# Equipment



<http://novalearningnetwork.com/wp-content/uploads/2014/05/p20-and-ms50-770x472.jpg>

Leica P20 Laser scanner

Leica TS15 total station

Z+F Imager 5010C  
Laser scanner



[http://www.zf-laser.com/uploads/pics/motiv3\\_finale\\_ausgeschnitten\\_01.png](http://www.zf-laser.com/uploads/pics/motiv3_finale_ausgeschnitten_01.png)



# Equipment



<http://www.surveyingequipment.com/uploaded/public/4e31747e84b196.97755820.jpg>

Leica GS15 GPS set

Leica DNA digital level

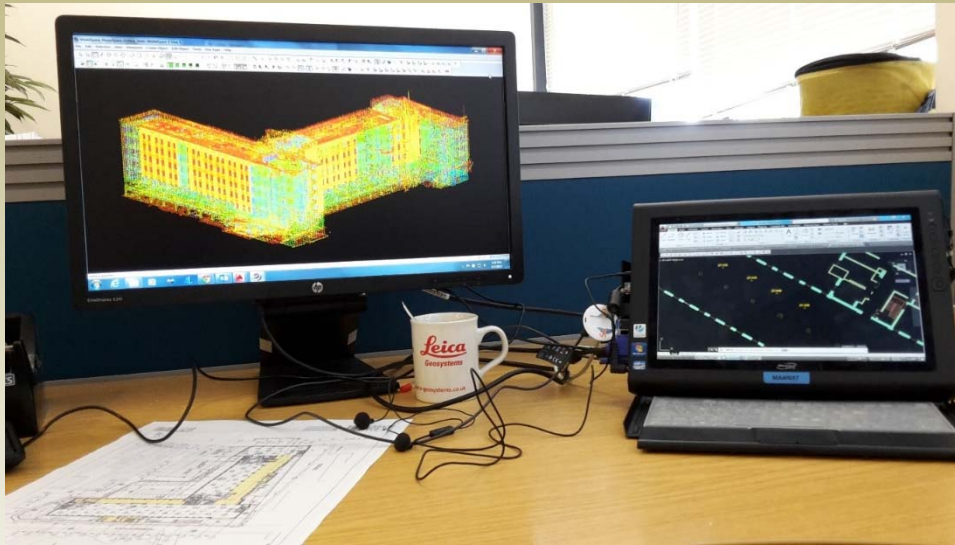


[http://www.allenprecision.com/media/catalog/product/1/e/leica\\_dna03.jpg](http://www.allenprecision.com/media/catalog/product/1/e/leica_dna03.jpg)





# Office



Typical workspace in the office

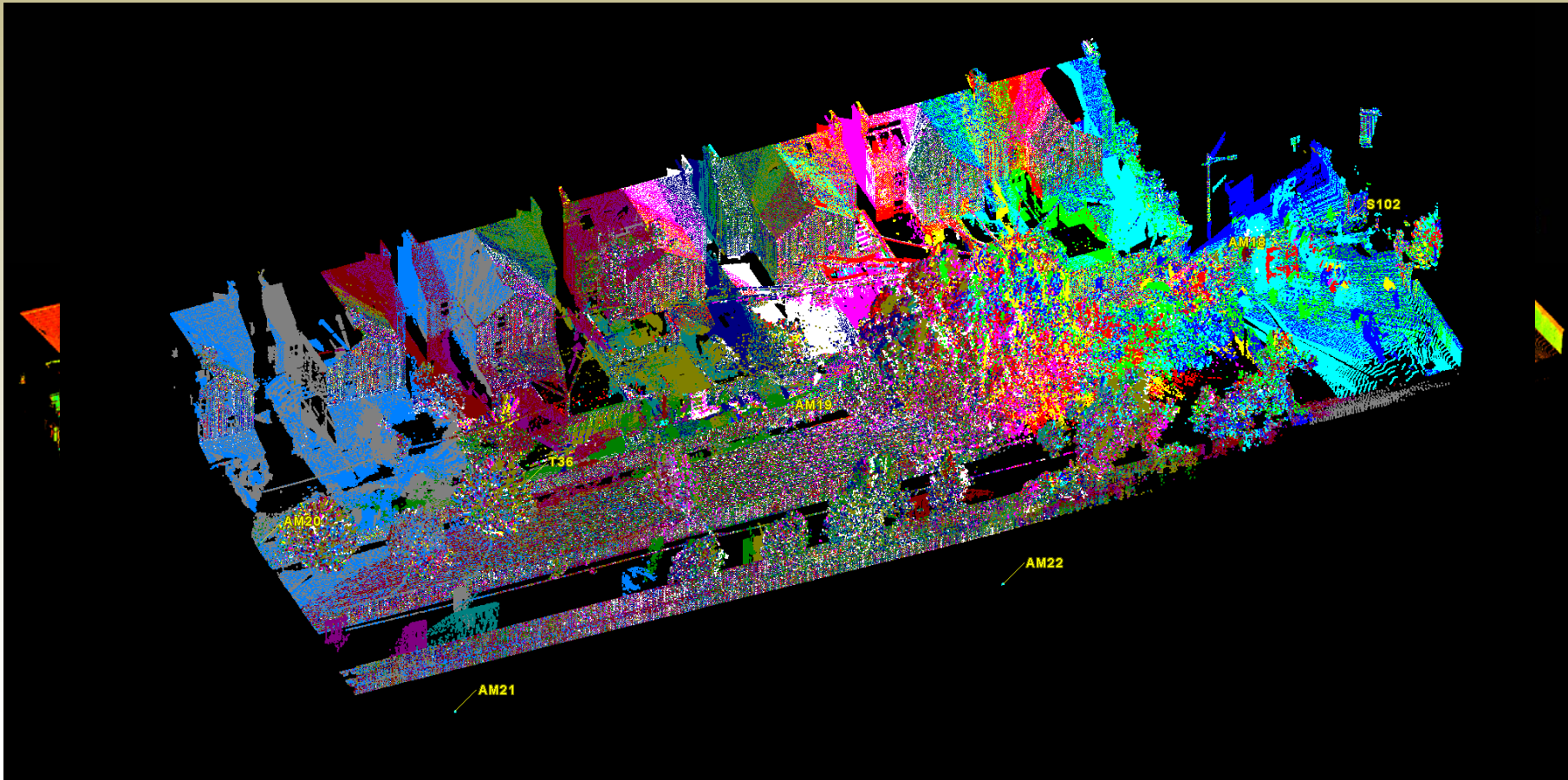
*Extracting features of a 3D unified point cloud  
to a 2D floorplan*

**Work with Leica Cyclone and Leica CloudWorx for AutoCAD**



# Office - registration

→ Register scans and use **filters**

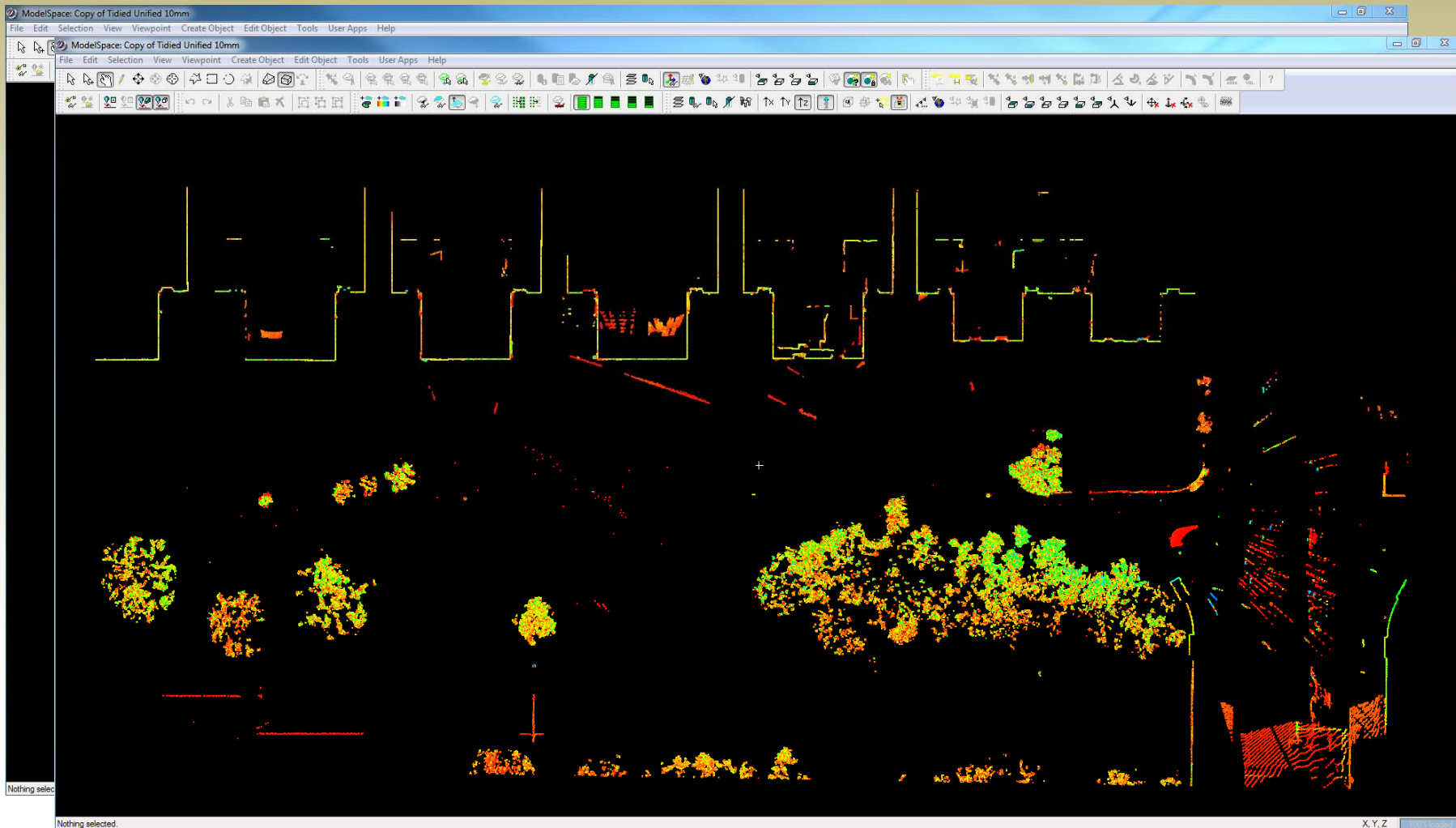


→ Create **unified and tidied** point clouds



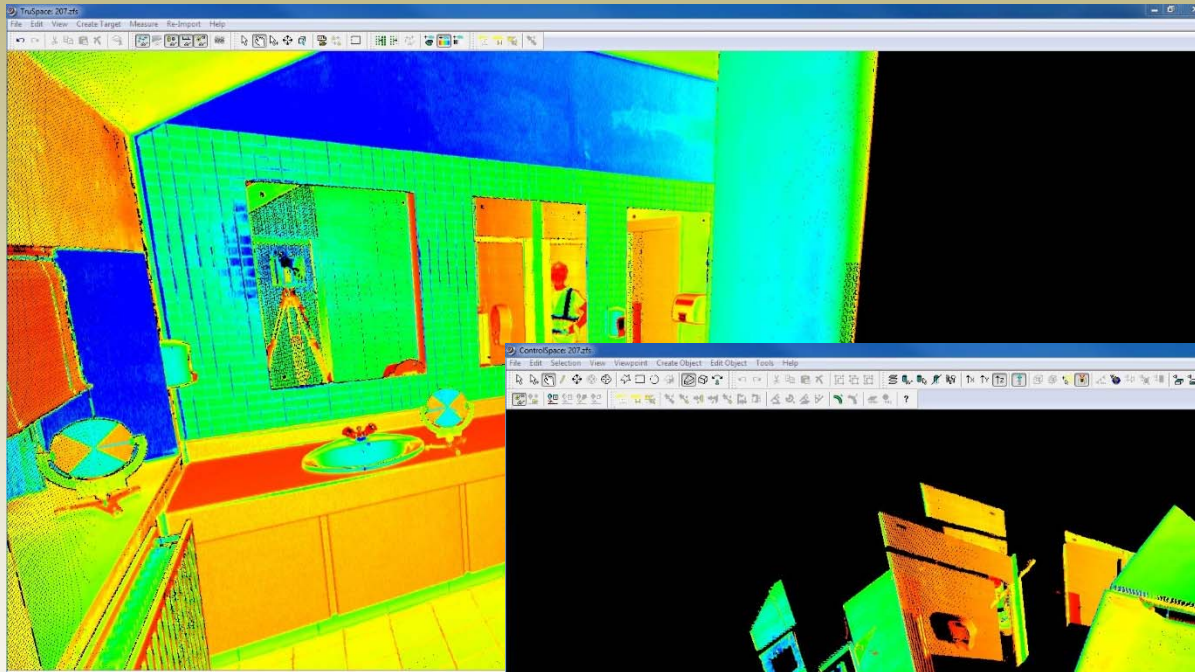
# Office - registration

Check the quality of the point cloud:

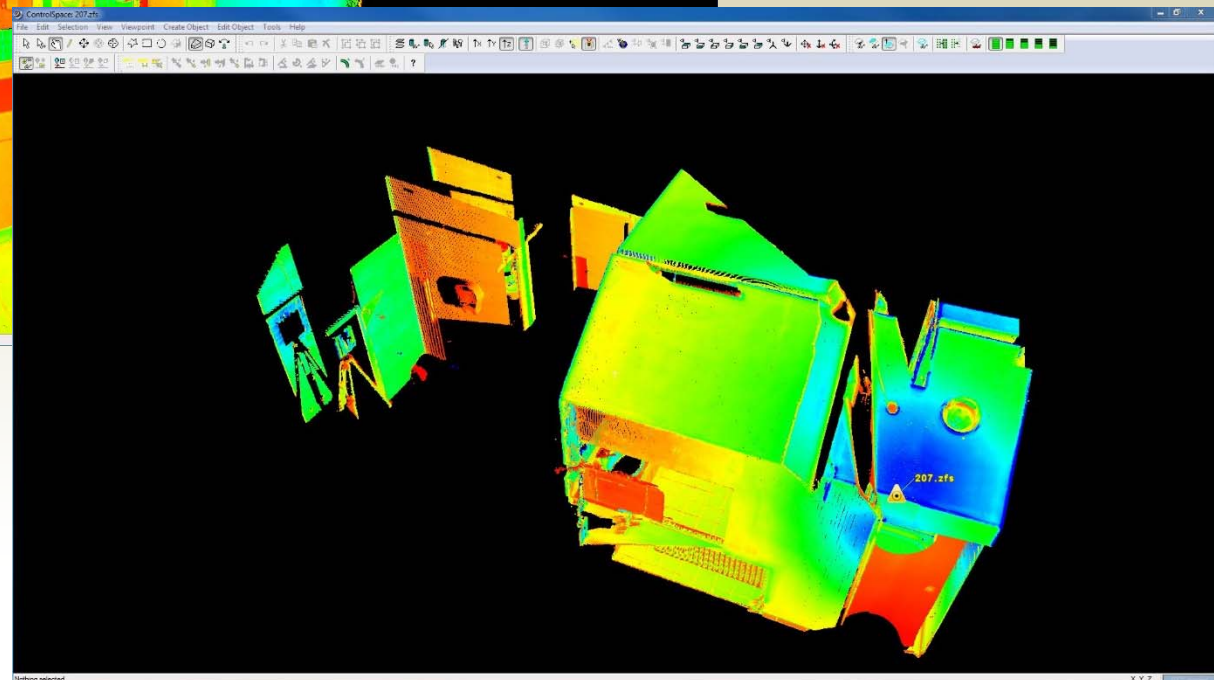




# Office - filtering



Big issue:  
**Mirrors!**





# OPW – my 1st project



## OPW Head Quarter in Trim, Co. Meath



→ scan of the **entire building** from the outside (elevations)  
and the inside (4 floors + basement)



## OPW - client

What the client requires:

- Current **2D floor plans** and **elevations** of the whole building
- A detailed **BIM** (*Building Information Modelling*) of the entire building



# OPW – laser scanner

## Z+F Imager 5010C laser scanner



### Reasons:

- 360° scans + HDR panorama picture
- Create colourized point clouds  
→ every pixel receives a RGB value
- difficult geometry of the building



# OPW - targets



B&W tilt-and-turn and paper targets

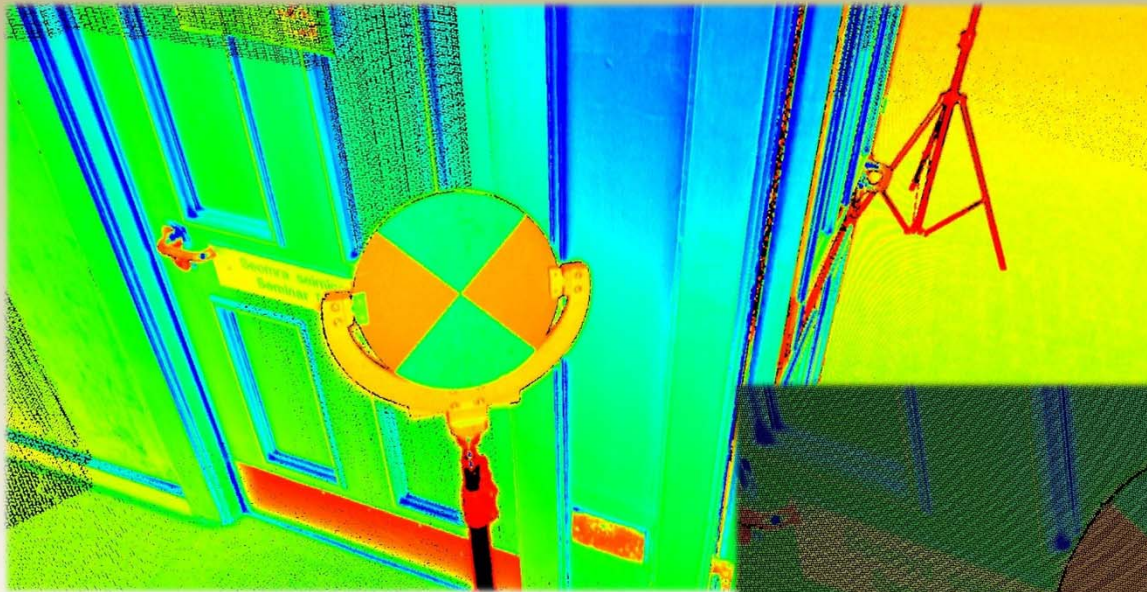






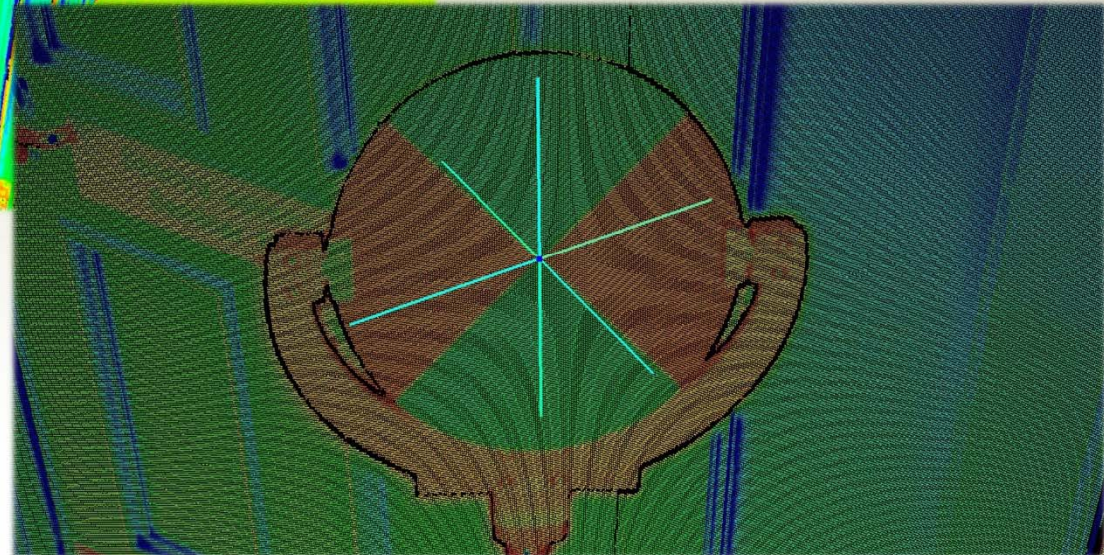
# OPW - targets

B&W tilt-and-turn targets aka. “Lollipop“



Appearance in the  
point cloud  
(*Leica Cyclone*)

Registration of targets





# Excursion

Rolling legs,  
quick change of setup!



Spherical target  
with magnetic stand



At least **3 targets**  
for each scan



## OPW – result

Complete scan of the OPW head quarter

→ **480 scans**

*(60 scans for the basement and  
100 to 110 scans for each floor)*

**in 14 days** on site

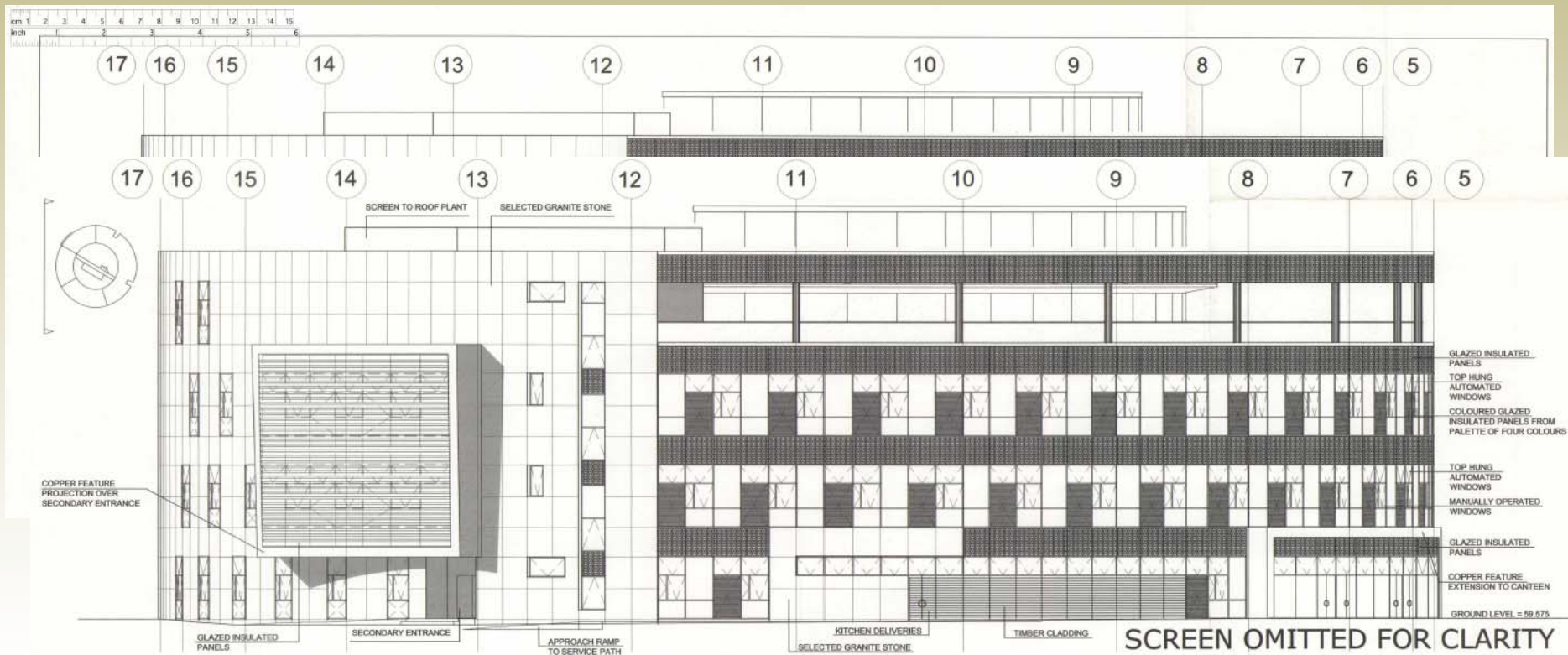
+ work in the office

⇒ **huge amount of data!**



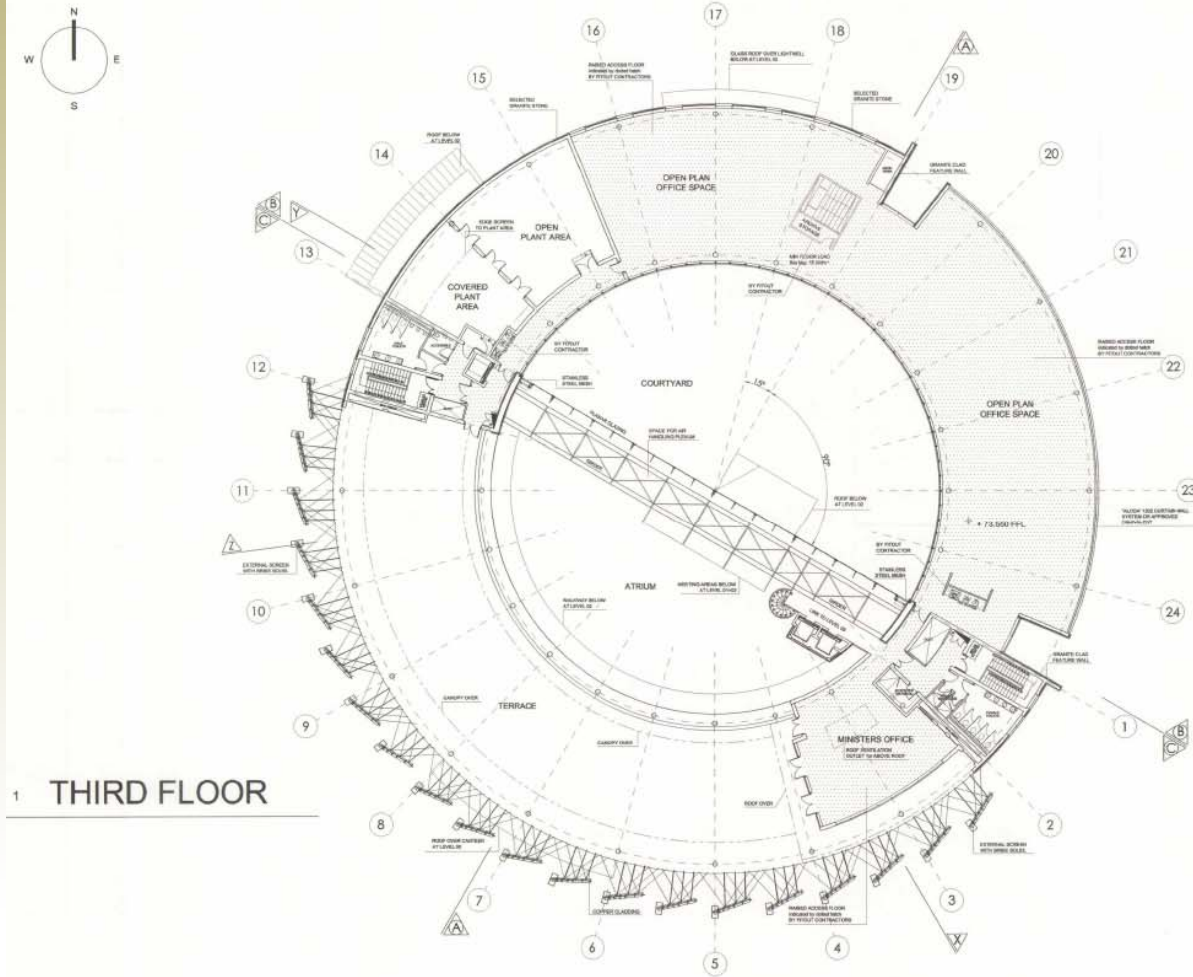
# OPW – elevations

What the client receives:

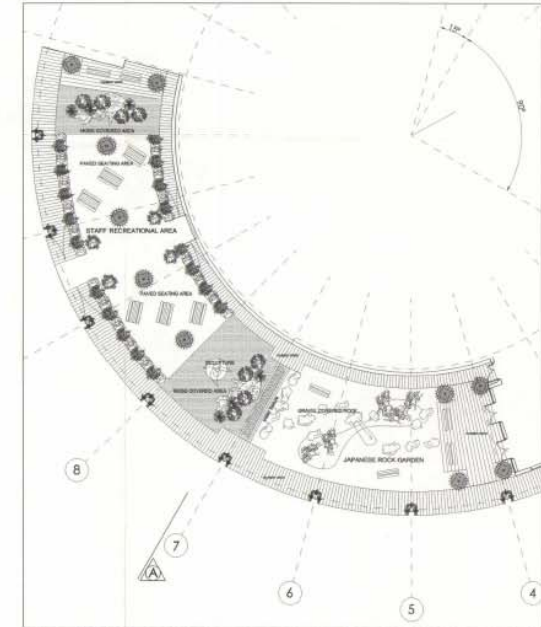




# OPW – floor plan



1 THIRD FLOOR



2 OUTLINE OF PROPOSED ROOF GARDEN

LANDSCAPING OF ROOF GARDEN BY FIT OUT CONTRACTOR



**THANKS  
FOR  
LISTENING**





Ireland – just a great craic !





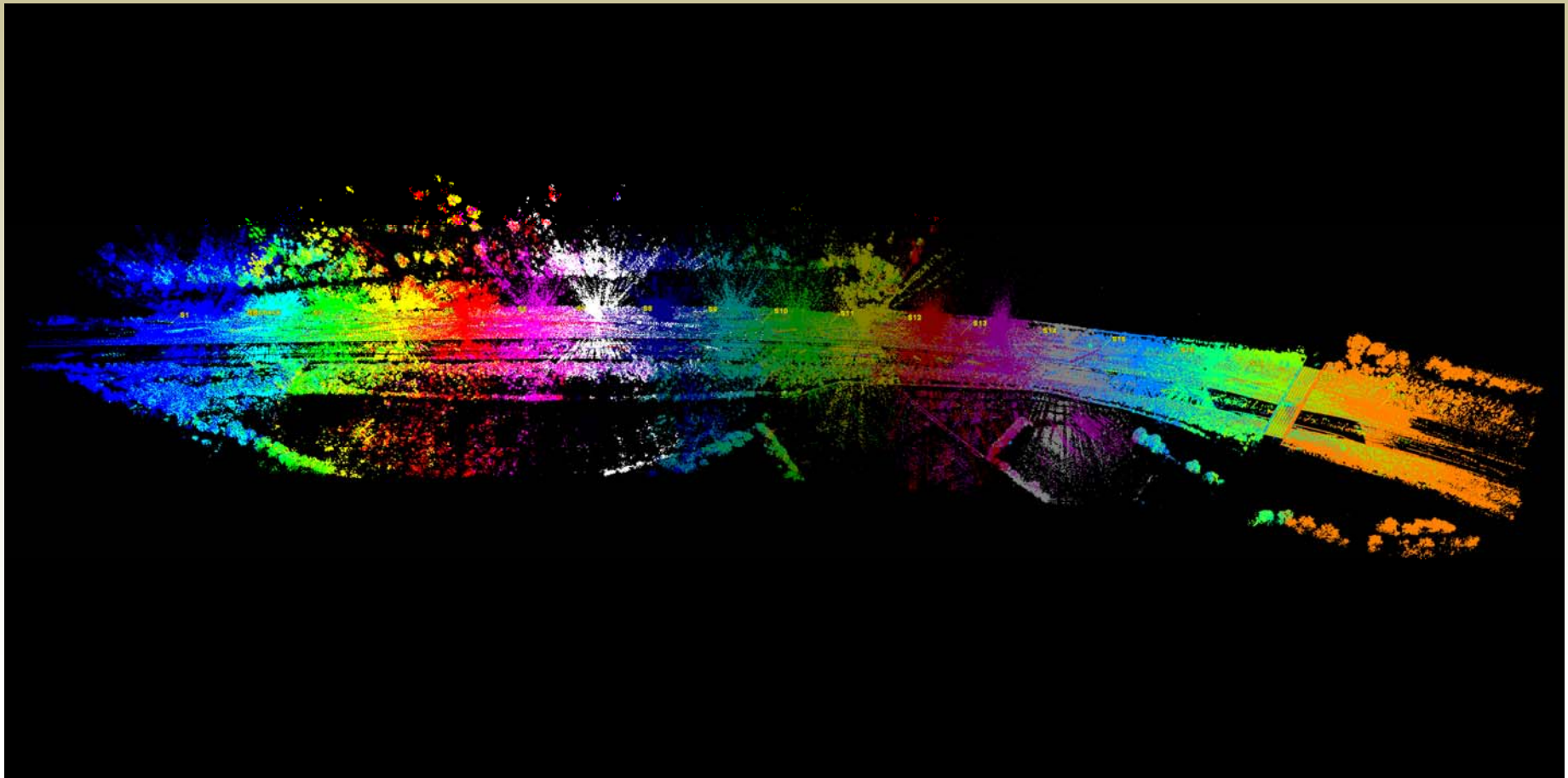
...Fortsetzung folgt...





# M7 motorway

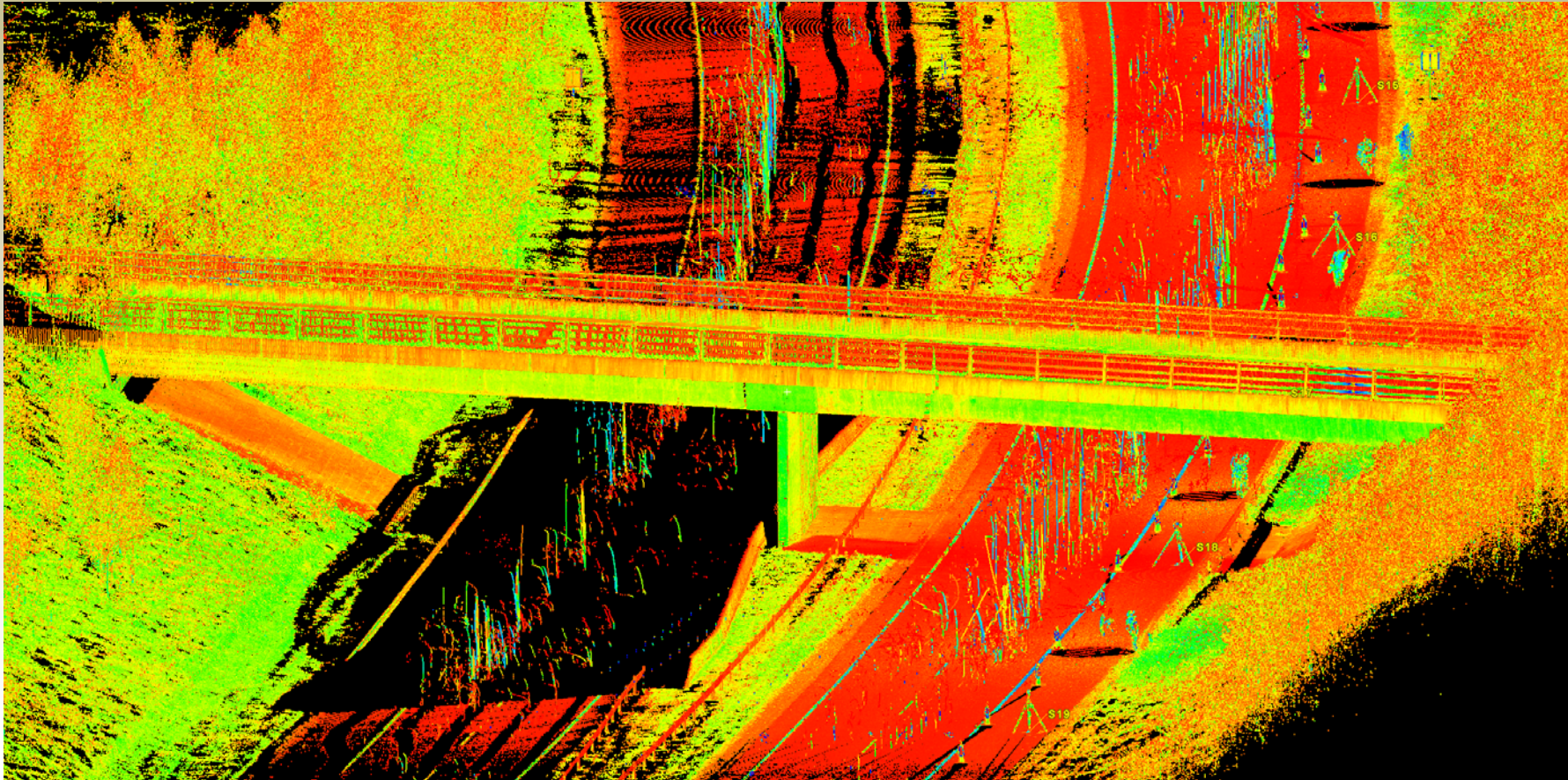
After cloud to cloud registration with Leica Cyclone:





# M7 motorway

Untidied but unified point cloud:

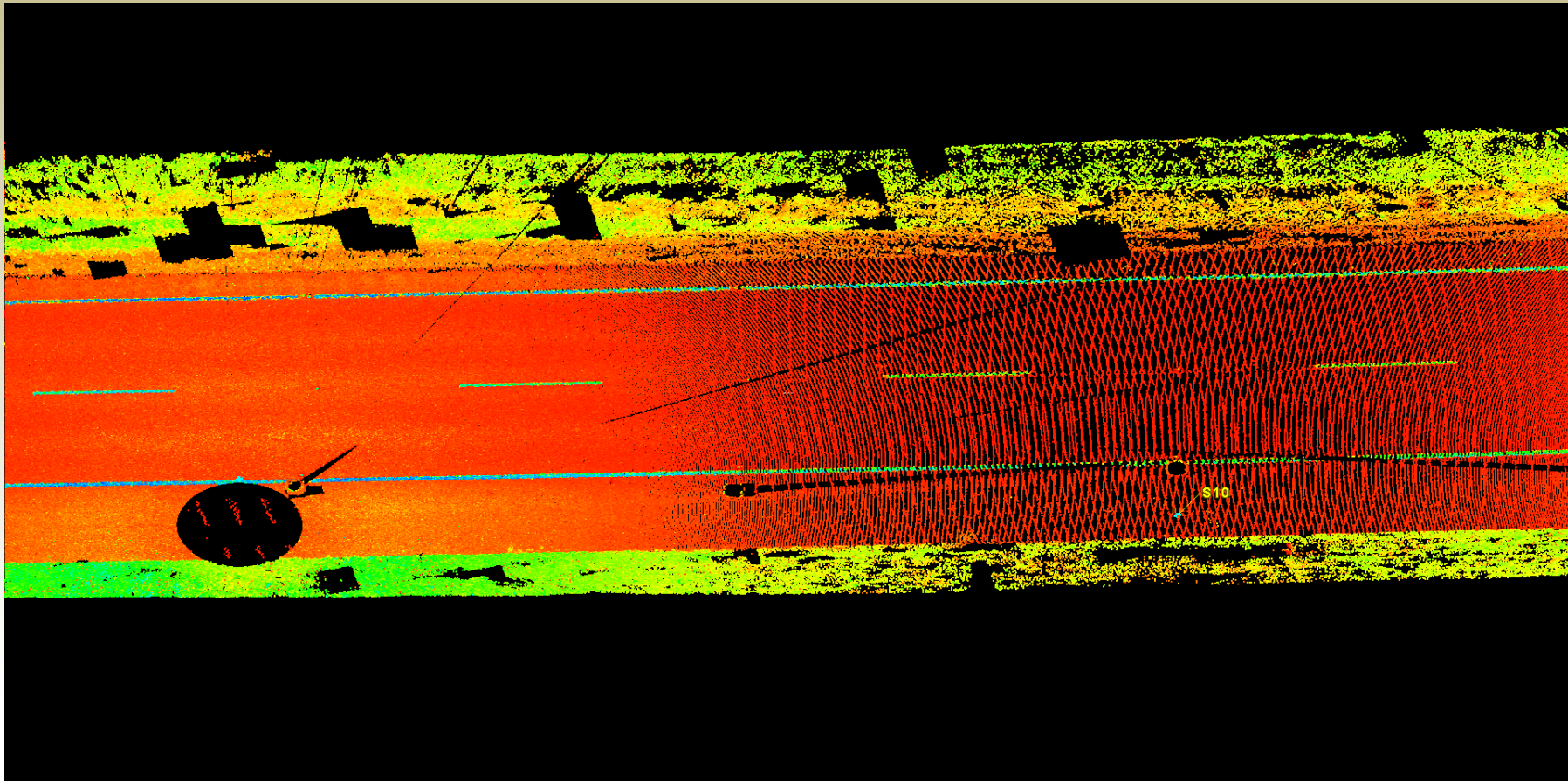


→ a lot of noise (e.g. vehicles that pass by)



# M7 motorway

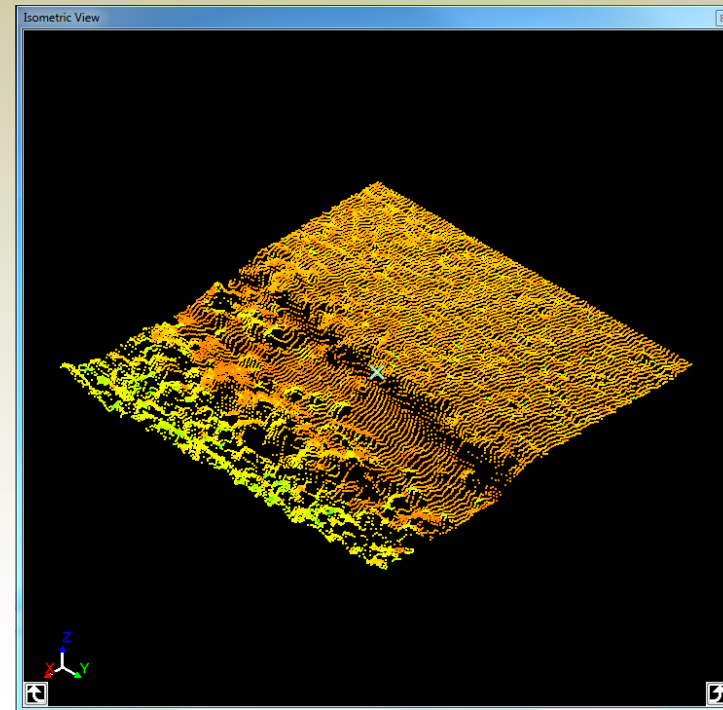
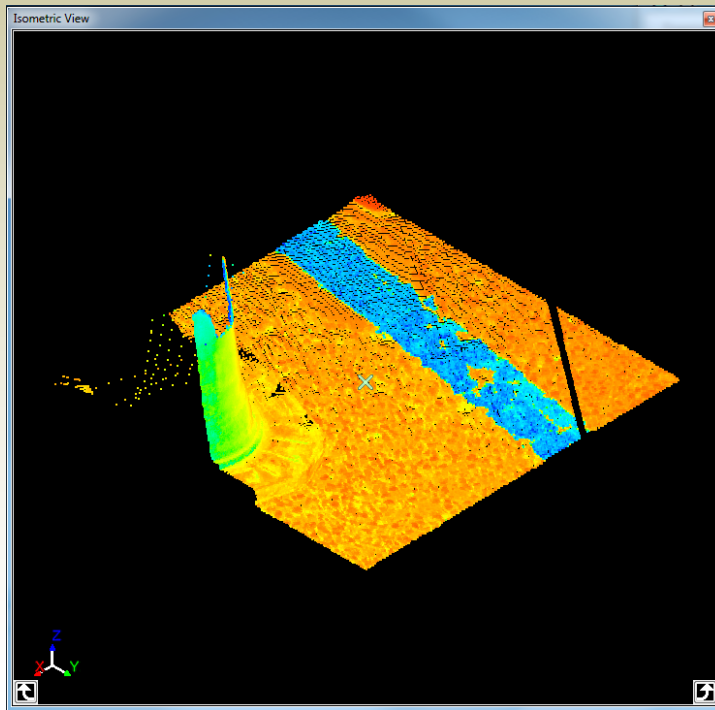
Solution: Filtering the noise with **smooth surface!**





# M7 motorway - Topo

- Use the pointcloud to **create a topographical map !**
- Capture topographical information with **Leica Cyclone Topo II**

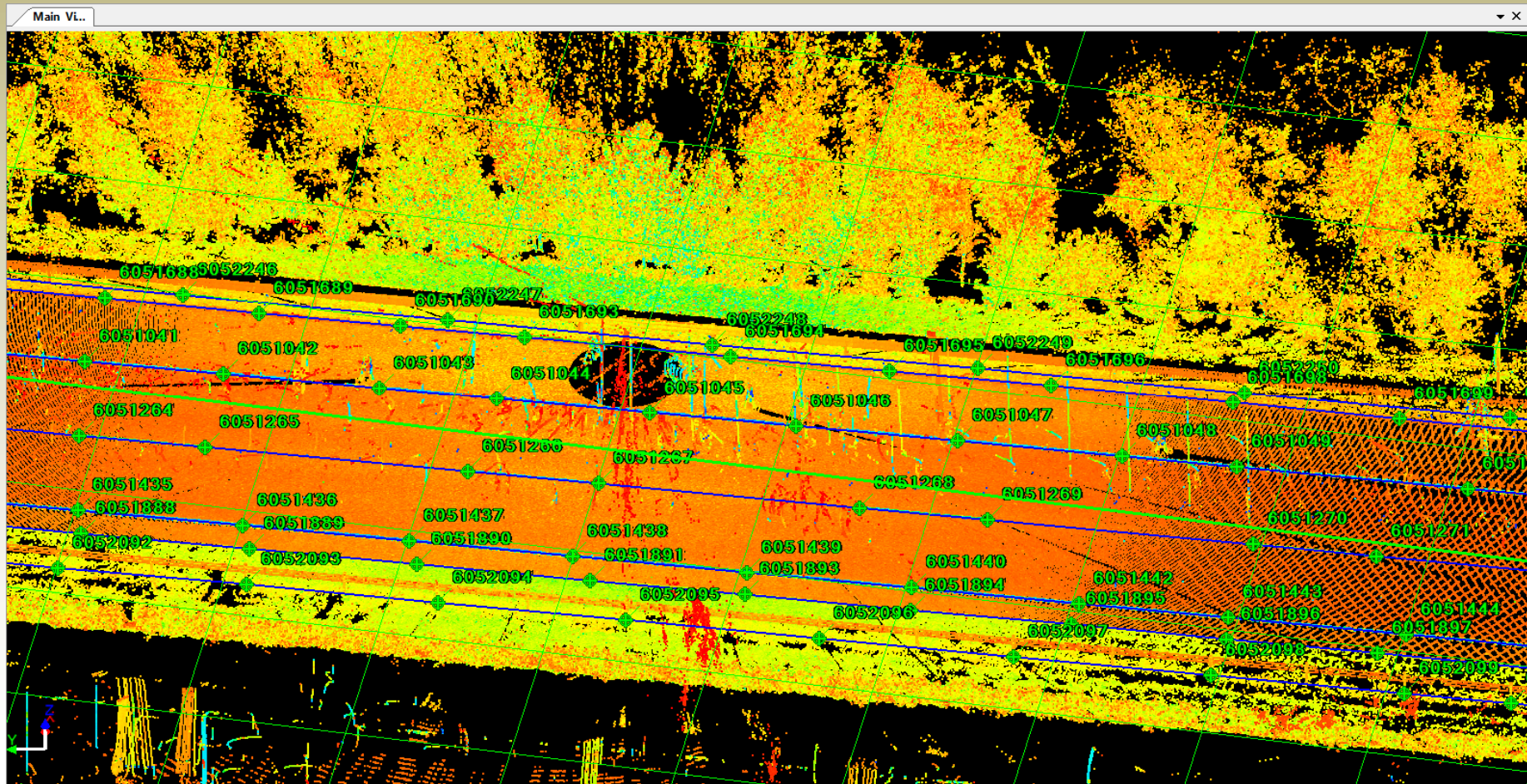


→ Select single points (e.g. for height information)



# M7 motorway - Topo

→ Draw / select topographical lines



→ **export** gathered topographical Information to AutoCAD